

# Distributorless Ignition System

## Raven



Alternative Fuel Systems' economical **Raven** ignition system delivers precision spark energy to gaseous-fuelled engines. Its flexibility ensures that your fleet benefits from the most advantageous balance of durability, fuel economy and emissions reduction.

- Universal control module for all your applications
- Compatible with both mechanical and electronic fuelling systems
- Coil-per-cylinder non-wasted-spark inductive system
- Universal high-resolution timing disk for 4 or 6 cylinder engines allows faster starting
- All-weatherproof design allows under-hood installation
- System protection through active spark diagnostics
- Multi-spark feature enhances combustion at low engine speeds
- Customer-configurable circuits for fuel shut-off control and other requirements
- Two analog inputs for throttle position sensor (TPS) or manifold absolute pressure (MAP) and engine coolant temperature (ECT) sensor
- Automatic Voltage sensing for 12 or 24 Volt applications
- Programmable by authorized technicians

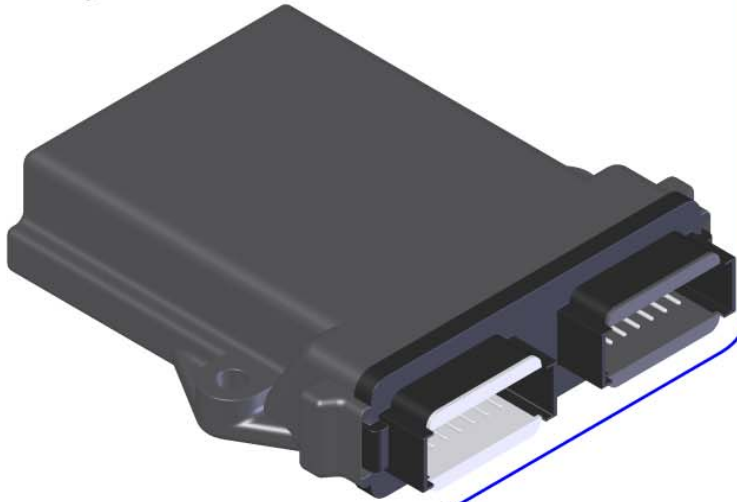


*Alternative Fuel Systems (2004) Inc.*

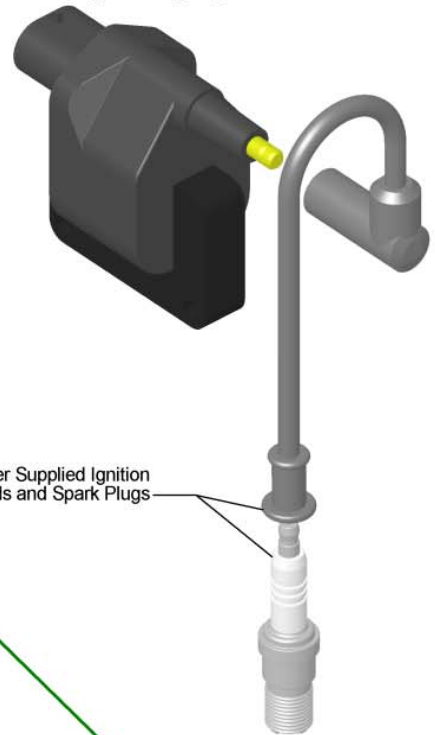
Unit 1, 4321 - 14<sup>th</sup> Street NE, Calgary, Alberta, Canada T2E 7A9

Phone: +1 (403) 262-1833 Fax: +1 (403) 237-7441 E-mail: [sales@afsglobal.com](mailto:sales@afsglobal.com) Web: [www.afsglobal.com](http://www.afsglobal.com)

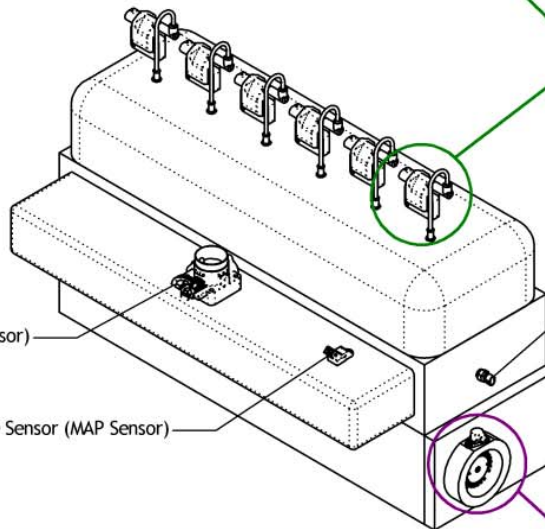
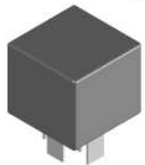
Raven Ignition Control Module



High Voltage Ignition Coils



Optional Fuel Cut-Off Relay



Throttle Position Sensor (TP Sensor)

Manifold Absolute Temperature Sensor (MAP Sensor)

Engine Coolant Temperature Sensor (ECT Sensor)

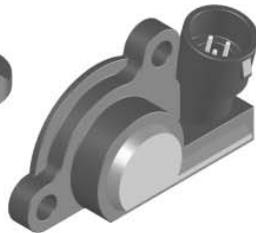
Optional Sensors



ECTS



MAPS



TPS

Camshaft Position Sensor (CMP Sensor)

